

**interactive**



Accident avoidance by active intervention for Intelligent Vehicles

[www.interactIve-ip.eu](http://www.interactIve-ip.eu)

## Commercial Vehicle Sensor Data Fusion Applications

**Grant Grubb**  
**interactIve Summer School**  
**4-6 July, 2012**

# Agenda

- Introduction to Commercial Vehicle Sensor Data Fusion
- Challenges Developing for Commercial Vehicles
- Production SDF Applications – Examples
- Research SDF Applications – Examples
- Lessons Learned and the Future



# Introduction to Commercial Vehicle Sensor Data Fusion

- Data fusion in the context of Advanced Driver Assistance Systems (ADAS)
  - Perceiving the environment around a vehicle
- ADAS are systems that support the driver in their task, for increased:
  - Safety
  - Efficiency
  - Comfort
- Examples:
  - Adaptive cruise control (comfort, safety, efficiency)
  - Lane change support (safety)
  - Collision warning (safety)

# Introduction to Commercial Vehicle Sensor Data Fusion

- ADAS must be error free over millions of km of driving in many different environments
  - Places high demands on sensing the driving environment
- Why sensor data fusion?
  - Single sensor coverage limitations (range, field of view)
  - Complementary information (exploit different sensor properties)
  - Redundancy (increase reliability)
  - Object refinement (state estimation of entities)
  - Situation refinement (estimation inferred relations among entities)

# Introduction to Commercial Vehicle Sensor Data Fusion

- One should differentiate commercial vehicles from passenger vehicles
- Many different types of commercial vehicles:
  - Trucks (long haul, distribution, rigid, tractor-trailer, double)
  - Busses (city, coach)
  - Construction equipment



# Agenda

- Introduction to Commercial Vehicle Sensor Data Fusion
- Challenges Developing for Commercial Vehicles
- Production SDF Applications - Examples
- Research SDF Applications – Examples
- Lessons Learned and the Future



# Challenges Developing for Commercial Vehicles

- Professional drivers have different expectations to that of passenger vehicles
  - Drivers spend longer in vehicle
  - Different visibility constraints
- Many different vehicle configurations
  - Large variation in sensor set to cover required zones
  - OEM usually does not manufacture cargo trailers/containers
- Suspension of vehicle/cabin is different to passenger vehicle
  - Sensor performance varies depending on mounting points
  - Cannot simply carry over ADAS systems between car and commercial vehicle
- Vehicles typically fleet owned rather than personally
  - Direct link to cost must be apparent (eg safety saves money)

# Agenda

- Introduction to Commercial Vehicle Sensor Data Fusion
- Challenges Developing for Commercial Vehicles
- Production SDF Applications - Examples
- Research SDF Applications – Examples
- Lessons Learned and the Future





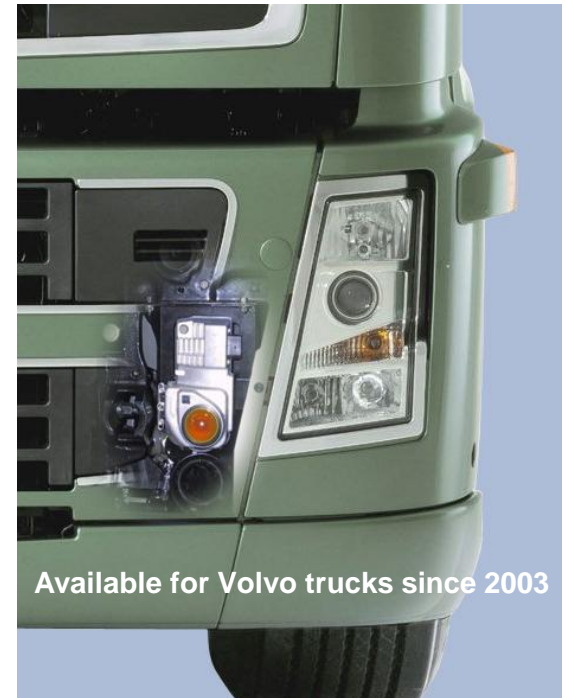
# Production SDF Applications

- Applications typically only:
  - Warn the driver
  - Perform gentle vehicle control
  - Function in simplified environments (eg highway)
  - Limited speed range
- Applications are usually developed from sensor systems dedicated to that specific application
  - Minimal sharing of sensor data between applications
  - Additional functions usually require additional sensors

# Production SDF Applications - Examples

## Adaptive Cruise Control

- Fusing:
  - Radar (77GHz LRR)
  - Ego vehicle dynamics (velocity and yaw rate)

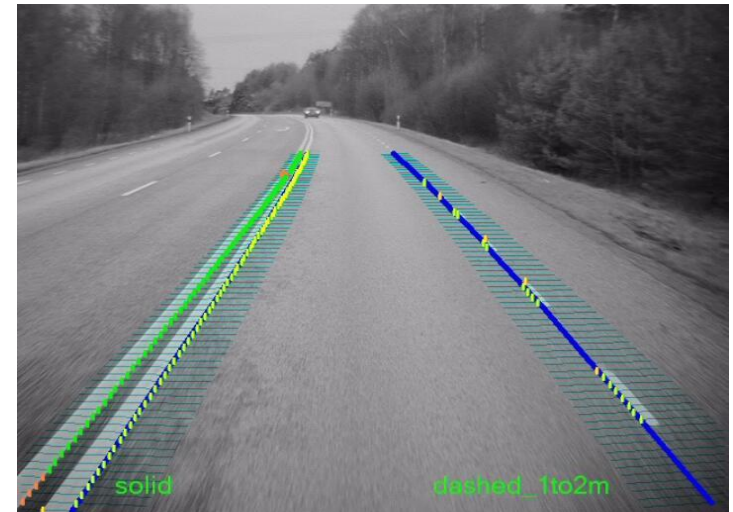


Available for Volvo trucks since 2003

# Production SDF Applications - Examples

## Lane Departure Warning and Driver Alert Support

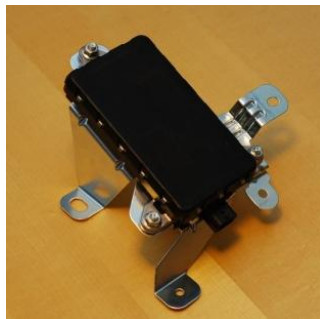
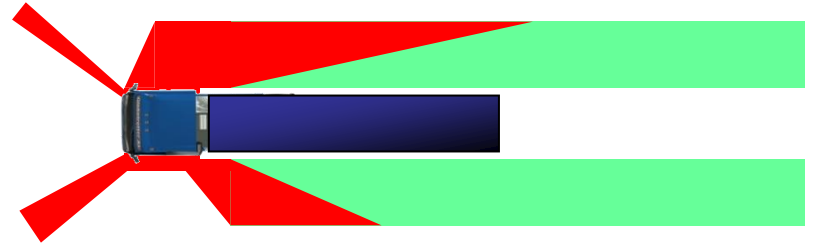
- Lane Departure Warning: warn when moving out of lane
- Driver Alert Support: warn when driver is perceived to be tired
- Fusing:
  - Lane position from camera systems
  - Ego vehicle dynamics (velocity, yaw rate steering angle, indicators)



# Production SDF Applications - Examples

## Lane Change Support

- Surveillance of blind spot areas to assist when changing lanes
- Fusing:
  - Short range radar
  - Ego vehicle dynamics



# Agenda

- Introduction to Commercial Vehicle Sensor Data Fusion
- Challenges Developing for Commercial Vehicles
- Production SDF Applications - Examples
- **Research SDF Applications – Examples**
- Lessons Learned and the Future



# Research SDF Applications

- Applications which have a higher level of intervention
  - Steering
  - Hard braking

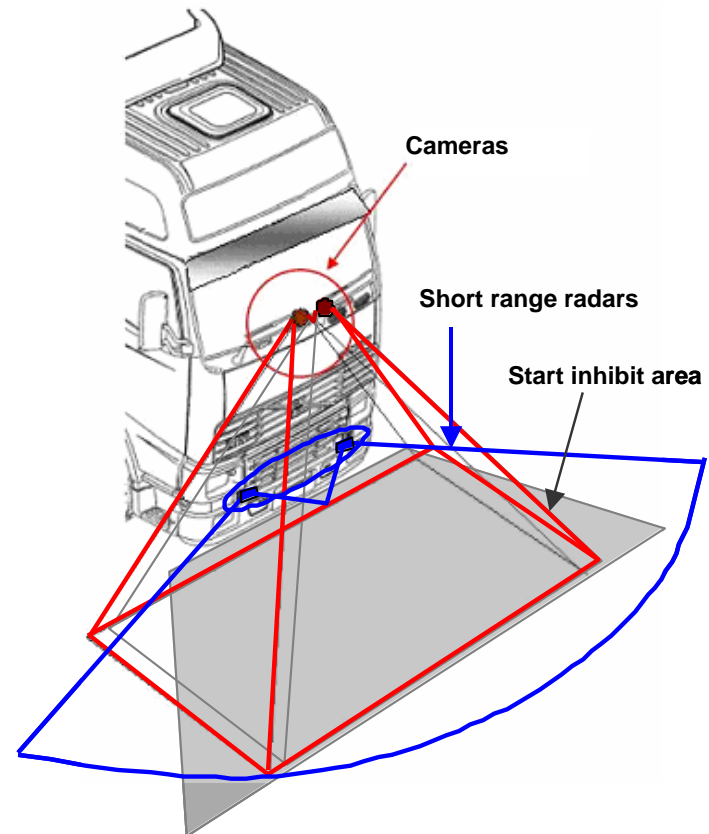
} Requires higher reliability and confidence from perception!
- Address a wider range of scenarios
  - Full speed range
  - More complex environments (eg. urban)
- More complete environment representation. Fusing:
  - Radar, camera, lidar, V2X, eHorizon, ego vehicle dynamics
- Shared fused representation between different ADAS functions

# Research SDF Applications - Examples

## Start Inhibit Functions (PReVENT EU FP6)



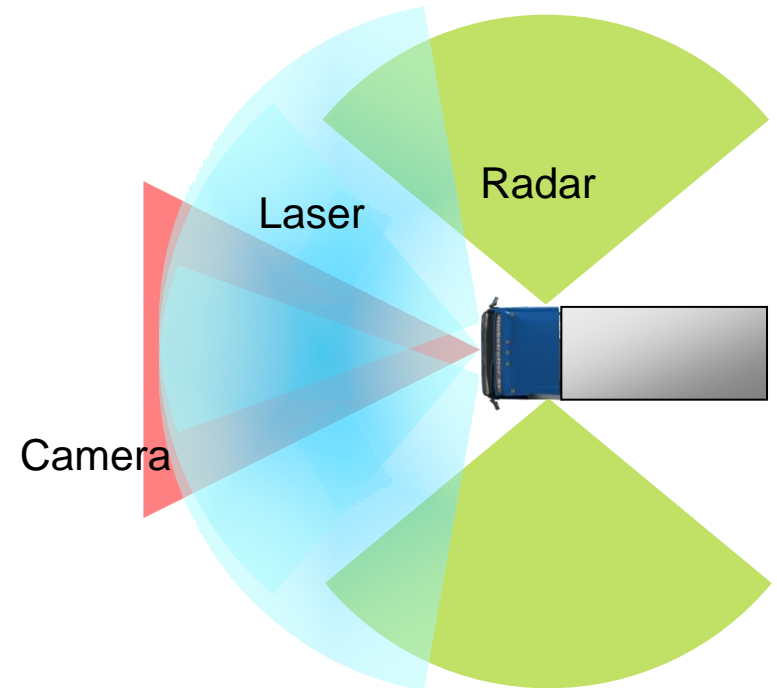
- 2004-2007
- Detection of VRU in the blind zone ahead
- Ignore driver start requests when VRU is present
- Fusing:
  - Stereo vision system
  - Short range radar (24 GHz)



# Research SDF Applications – Examples

## Automated Queue Assistance (HAVEit FP7 EU) HAVEit

- 2008-2011
- Low Speed ACC + Stop & Go + Lateral Control
- Fusing
  - 3 x Laser (110°, 200m range)
  - Camera (54°, 60m range)
  - 2 x Radar (110°, 8m range)

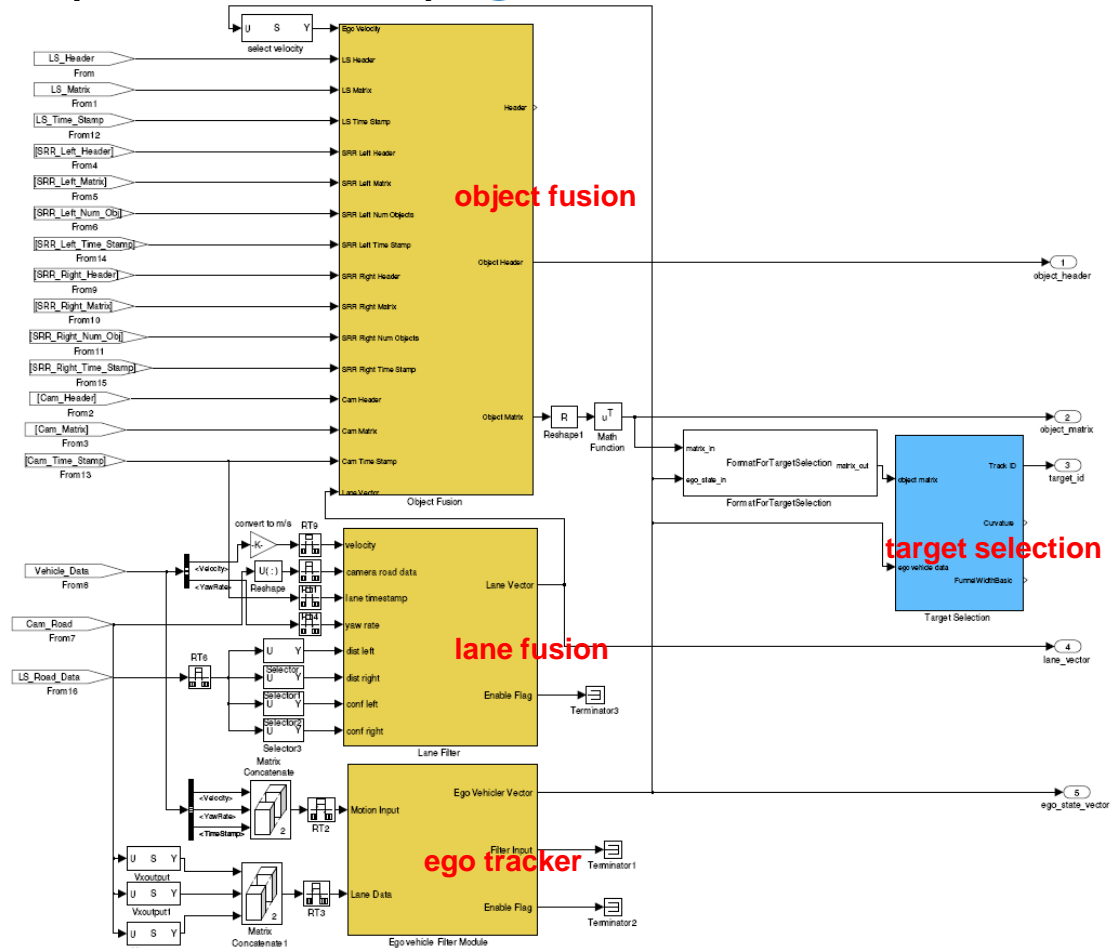




# Research SDF Applications – Examples

## Automated Queue Assistance (HAVEit FP7 EU) HAVEit

- Track-to-track object fusion LS + cam + radar
- Lane fusion from camera + LS
- Implemented in Simulink with C++, on xPC real-time workshop

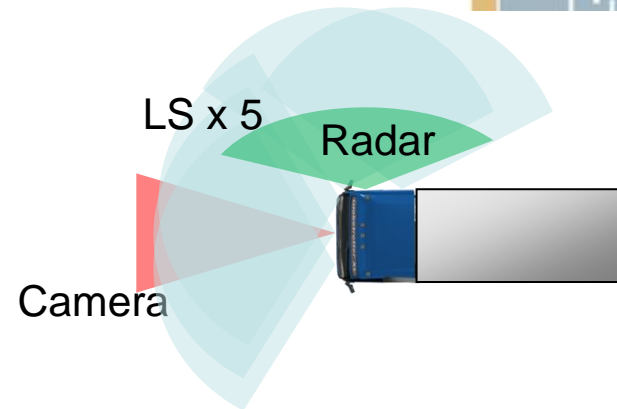
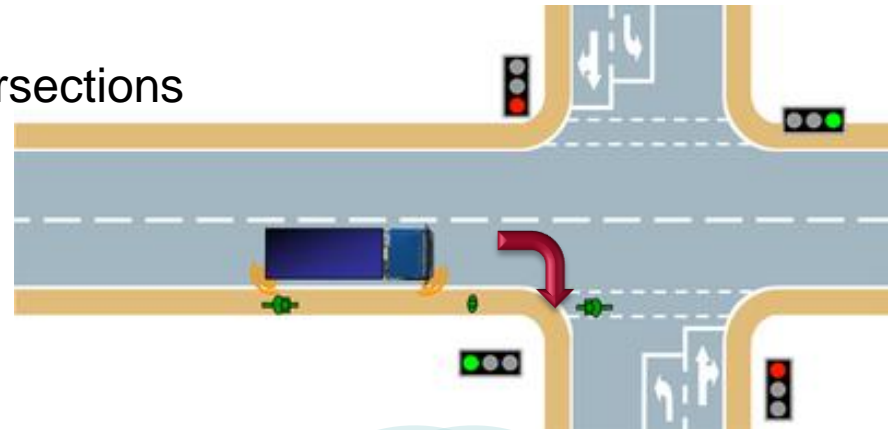


# Research SDF Applications – Examples

## Right-turn Assistance (Intersafe-2 FP7 EU)

INTERSAFE2

- 2008-2011
- Detection of VRU in right turns at intersections
- Fusing
  - 5 x Laser (110°, 200m range)
  - Radar (110°, 8m range)
  - Camera

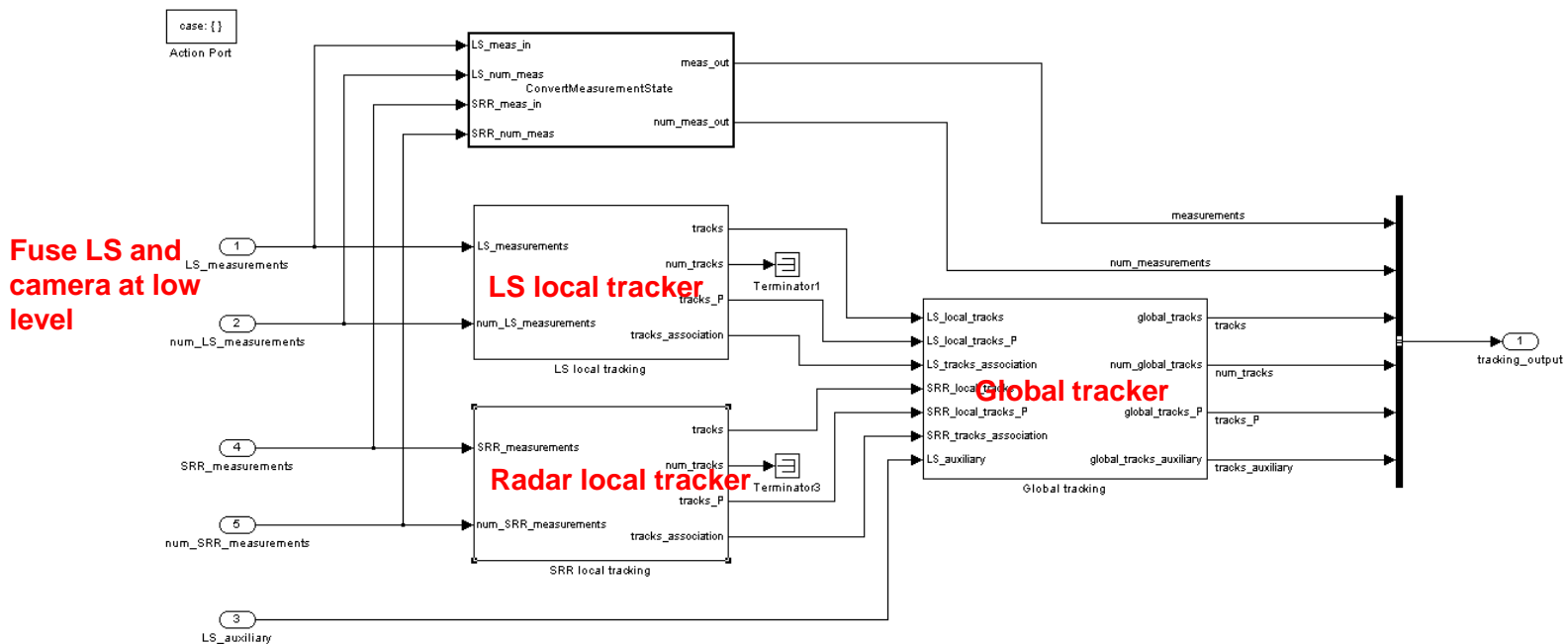


# Research SDF Applications – Examples

## Right-turn Assistance (Intersafe-2 FP7 EU)



- Track-to-track object fusion
- Implemented in Simulink with embedded Matlab on xPC real-time workshop

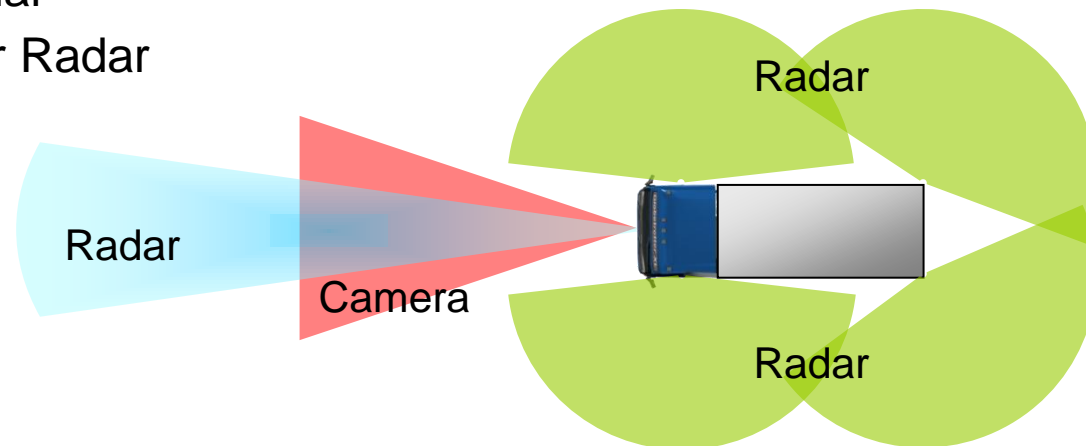


# Research SDF Applications – Examples

## Collision Avoidance (InteractIVe FP7 EU)



- 2010-2013
- Avoiding collisions via automated steering and braking
- Fusing
  - Camera
  - 1 x Fwd Radar
  - 4 x Side/rear Radar
  - Map
  - V2V

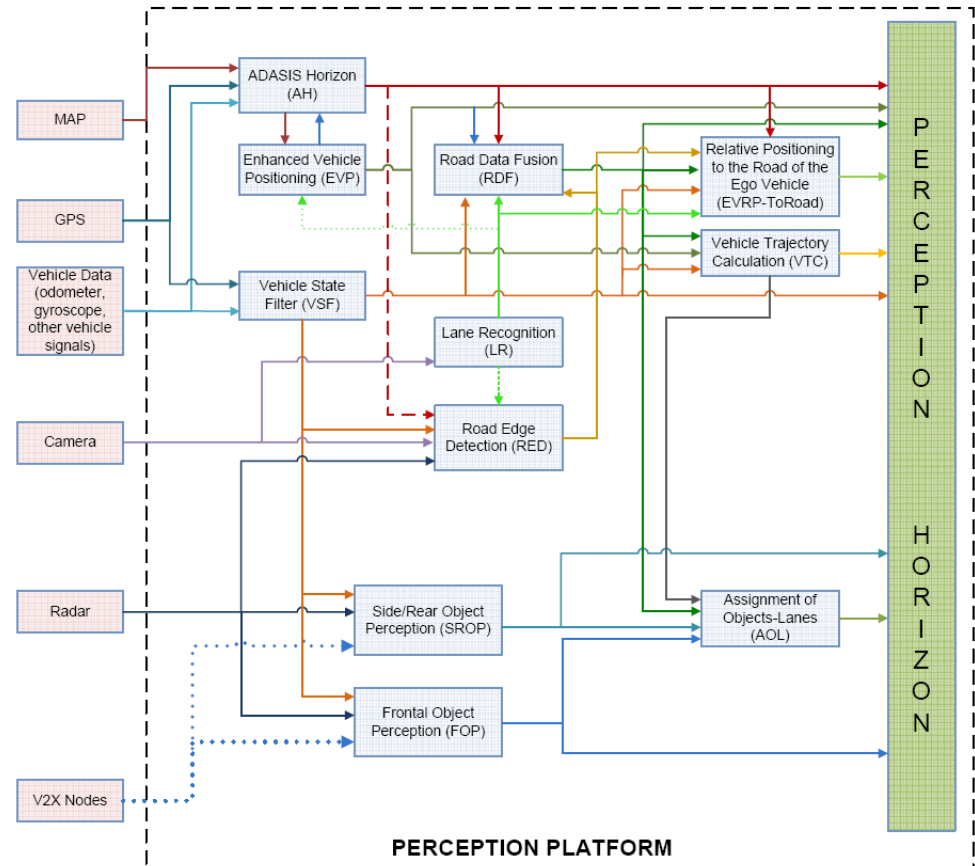


# Research SDF Applications – Examples

## Collision Avoidance (InteractiVe FP7 EU)



- Object track fusion (front radar + side/rear radar)
- Lane fusion (camera + map)
- Road edge fusion (camera + radar + map)
- Implemented in ADTF (C++) with Windows XP



# Research SDF Applications – Examples

## Platooning (SARTRE FP7 EU)



- 2009-2012
- Vehicle platooning for fuel efficiency, safety, and comfort
- Multiple vehicles with different sensors
- Following truck fuses:
  - Stereo vision
  - Radar
  - V2V
- Track-to-track object fusion



# Agenda

- Introduction to Commercial Vehicle Sensor Data Fusion
- Challenges Developing for Commercial Vehicles
- Production SDF Applications - Examples
- Research SDF Applications – Examples
- Lessons Learned and the Future



# Lessons Learned and the Future

- Standardising fusion development platforms
  - Selecting a development platform that works in research projects and for product development
- Generic fusion (plug and play)
  - Exchange sensors with minimal fusion changes
  - Architecture which supports PnP
  - Common interfaces
- Integrated perception
  - Perception of entire vehicle environment



# Lessons Learned and the Future

- Better utilisation of V2X
  - Provides more information than traditional sensors
  - But still not exploited fully in fusion systems
- Legislation for AEBS and LDW for HGV – 2013/2015

# Conclusions

- Fusion is an important aspect of automotive ADAS!
  - The demands from ADAS systems towards perception are high
  - We can only achieve this through a fusion of different sensors
- Perception is today the limiting factor in providing ADAS functions
  - Better fusion will improve perception

# interactive



Accident avoidance by active intervention for Intelligent Vehicles

[www.interactive-ip.eu](http://www.interactive-ip.eu)

Thank you.

Co-funded and supported  
by the European Commission



Grant Grubb  
Research Engineer  
Volvo Group Trucks Technology, Sweden  
[grant.grubb@volvo.com](mailto:grant.grubb@volvo.com)  
+46 31 323 3818

# VOLVO